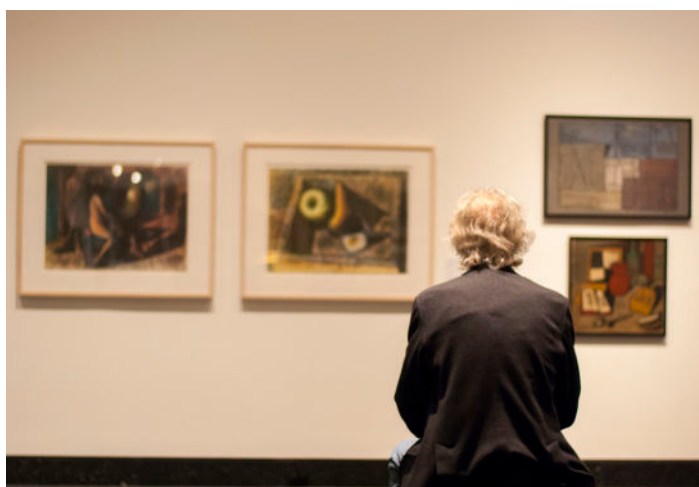


ANNUAL REPORT 2017-2018



ANNUAL REPORT

July 1, 2017 – June 30, 2018

TABLE OF CONTENTS

- 2 EXHIBITIONS
- 8 UNIVERSITY CLASSES
- 9 ACQUISITIONS
- 26 FINANCIALS
- 28 ENDOWMENTS
- 29 GIFTS
- 30 HARN NATIONAL COUNCIL MEMBERS



above: Frank Stella, *Zandvoort*, 1981, Gift of Martin Z. Margulies
back cover image: Jerry Uelsmann, *Untitled*, 1994, Gift of Melvin and Lorna Rubin, 1997.29.128

EXHIBITIONS

INTRA-ACTION: WOMEN ARTISTS FROM THE HARN COLLECTION

September 20, 2016 – July 16, 2017

Intra-Action celebrated 36 international women artists working from the mid-20th century to the present, including the groundbreaking, radical collective called The Guerrilla Girls. More than 70 works revealed how these women have transformed the course of art by introducing new forms, materials and processes including performance, film and art in the street.

Programs

- Lecture: Member of Guerilla Girls, February 14
- Discussion: UF scholars, February 26, 2017
- Gallery Talk: Kerry Oliver-Smith, Curator of Contemporary Art, October 16

SPOTLIGHT: LATIN AMERICA

November 8, 2016 – November 12, 2017

Spotlight: Latin America celebrated the contributions of 37 artists from the Caribbean, Mexico, Central America and South America. The works—roughly 50 in all—were drawn mostly from the Harn's collections with additional loans from private Gainesville collectors. The exhibition included Spanish translations of the gallery interpretation.

AMERICAN ABSTRACTION

February 21, 2017 – August 19, 2018

The American artists featured in this exhibition represented fine examples from a large and diverse body of the movements that have defined abstraction since 1945. Artists in these decades grappled with the making of meaning through artistic expression, the science of illusion, the power of color and shape, and the experimental possibilities of form and gesture.



above: Carrie Mae Weems, *Untitled*, from the *Kitchen Table* series, 1990/2010, Museum purchase, funds provided by the Melvin and Lorna Rubin Fund, 2011.7.1

EXHIBITIONS

SHOW ME THE MINI

March 21, 2017 – November 25, 2018

This exhibition, which was drawn from the Harn's permanent collection of Asian art, highlighted an overlooked theme in Asian art and presented a unique opportunity to remind viewers that art comes in all shapes and sizes. It also illuminated the investigation by our collective via constant inquiries into size, scale, modeling, technique, means/opportunities, and intellectual and theoretic growth.

Programs

- ▷ Museum Nights: May 11
- ▷ The Art of Smallness: Looking at Asian Miniatures: April 2
- ▷ Family Day: April 8

THE SAME BUT DIFFERENT

May 2 – October 22, 2017

The Same But Different celebrated the Harn's growing photography collection. It highlighted more than 90 photographs by 50 photographers arranged in 13 themes. The images in each theme shared a visual or conceptual component that was then interpreted through each photographer's unique sensibility.

BLANK SPACE: A GALLERY OF ACTIVITY AND IMAGINATION

June 27 – August 27, 2017

Blank Space invited visitors to create, respond and play in the museum. The gallery featured interactive installations; scheduled opportunities for yoga, storytelling and dance performances; and art by students.

Programs

- ▷ Play: Y-Not Theatre/Mark Harvey Levine, *A Walk in the Ocean*, August 10
- ▷ Play: Y-Not Theatre/Sarah Bewley, *Everything you Need*, August 26
- ▷ Workshop: July 15
- ▷ Museum Nights: July 13
- ▷ Dance Performance: Haley Simmons, UF Center for World Arts/Harn Choreographer-in-Residence, July 22
- ▷ Fiber Arts Gathering: July 23
- ▷ Yoga: June 27, June 28, July 5, July 11, July 12, July 18, July 19, July 25, July 26, August 1, August 2



EXHIBITIONS

POETIC AND POLITICAL

August 15, 2017 – July 8, 2018

Poetic and Political explored two realms of perception often considered oppositional but more likely to work in tandem to make a rich, provocative and compelling visual impact. The exhibition juxtaposed the work of Josef Albers, a single artist focused on the psychic and emotive qualities of color, with African and African American artists who confront the historic and contemporary traces of colonialism as they contribute to the power of healing and renewal.

BECOMING A WOMAN IN THE AGE OF ENLIGHTENMENT: FRENCH ART FROM THE HORVITZ COLLECTION

October 6 – December 31, 2017

Nearly 120 drawings, pastels, paintings and sculptures by prominent French artists of the eighteenth and early nineteenth-century were on loan from one of the most comprehensive and superb private collections of its kind. *Becoming a Woman* was organized into thematic sections that addressed some of the most important and defining questions of women's lives in the eighteenth century.

Programs

- ▷ Curator Talk: Melissa Hyde (Curator of *Becoming a Woman* and UF Professor of Art History) and Maura Gleeson (ABD in Art History at UF), October 8
- ▷ Film: October 12, October 19, October 26
- ▷ Dance Performance: Haley Simmons, Center for World Arts/Harn Museum Choreographer-in-Residence, October 15
- ▷ Tour & Performance: Phillips Center, *The Other Mozart*, October 24
- ▷ Symposium: October 20 – 22
- ▷ Family Day: November 4
- ▷ Museum Nights: November 9
- ▷ Gallery Talk: Matthew Jarvis, UF Visiting Assistant Professor in Modern Art History, November 12
- ▷ Ask an Artist: Richard Heipp, Bethany Taylor, Daniel Stepp and Jillian Marie Browning, November 19



top: Zohra Opoku, *Nana Afia Serwaa Bonsu I, Appiadu Hemaah*, 2016, Museum Purchase with funds from the Ruth P. Phillips Art Acquisition Endowment, 2016.68; bottom: Antoine Vestier, *Allegory of the Arts*, 1788, On loan from the Horvitz Collection, L2017.6.145

EXHIBITIONS

VAST: PHOTOGRAPHS BY JONI STERNBACH

November 21, 2017 – April 22, 2018

Imbued with the elemental, Joni Sternbach's photographs capture the vast terrains of desert and ocean through a unique interplay between image and materials. Choosing wet plate collodion, analog, digital or video technologies, Sternbach's landscapes reference history and the contemporary sublime.

Programs

- Curator Talk: Carol McCusker, Curator of Photography, December 3
- Family Day: January 27
- Artist Lecture: Joni Sternbach, February 18



ABC: ART BY THE LETTER

December 12, 2017 – June 3, 2018

ABC: Art by the Letter highlighted the Harn's diverse collecting areas through an alphabetical exploration of subject matter, medium and formal elements. Favorite and lesser-known works illustrated the visual and phonetic connections to the English language and alphabet. From alligator to zig-zag, this exhibition delighted children, families and the young-at-heart.

EXHIBITIONS

HISTORY, LABOR, LIFE: THE PRINTS OF JACOB LAWRENCE

February 13 – August 5, 2018

This exhibition provided an overview of influential American artist Jacob Lawrence (1917 – 2000). Lawrence was primarily concerned with the narration of African American experiences and histories. His acute observations of community life, work, struggle and emancipation during his lifetime were rendered alongside vividly imagined chronicles of the past. The past and present in his work are intrinsically linked, providing insight into the social, economic and political realities that continue to impact and shape contemporary society today.

Programs

- ▷ Family Day: June 9
- ▷ Museum Nights: July 12
- ▷ Member pARTy: February 16
- ▷ Educator Workshop: February 21
- ▷ Community Kick-Off: February 24
- ▷ Curator Talk: Susan Cooksey, Curator of African Art February 24
- ▷ HESCAH Lecture: Richard J. Powell, John Spencer Bassett Professor of Art and Art History, Duke University, March 30
- ▷ Gallery Conversation: Rebecca Nagy (Harn Director) and Richard Heipp (UF Research Foundation Professor, School of Art and Art History): April 8
- ▷ Museum Nights: April 12
- ▷ Theatrical Performance: UF Center for Arts in Medicine and The Actors' Warehouse Community Theatre, *From Colored to Black: The Stories of North Central Florida*: April 15
- ▷ Gallery Talk: David Geggus: UF Professor of History: April 22



above: Jacob Lawrence, *The Builders (Family)*, 1974, All works courtesy the Jacob and Gwendolyn Knight Lawrence Foundation, L2017.15.59

EXHIBITIONS

CONSERVING TREASURES: JAMINI ROY AND MODERN INDIAN ART

March 17, 2017 – August 5, 2018

One cannot overstate the importance of Jamini Roy's (1887 – 1972) revolutionary role in the development of modern Indian art from the late colonial period to the establishment of India as a nation state in 1947. Roy is considered one of the pioneering artistic leaders symbolizing the creation of a new "national art" for India. Although formally trained in European academic realism, the folk art traditions of his native region of Bengal significantly influenced Roy's mature painting style. Folk art inspired Roy to forge a powerful weapon of anti-colonial resistance through his art.



OBDURATE SPACE: ARCHITECTURE OF DONALD JUDD

April 3 – June 24, 2018

In this exhibition of selected built projects and proposals for architecture, Donald Judd's connection to and freedom from architecture culture was explored, and the integral nature of his art and architecture practice was revealed.

RESILIENT VISIONS: HAITIAN ART

April 25 – November 13, 2018

This exhibition provided a glimpse of the wide diversity of genres, media and inspirations of Haitian art from 1969 to the first decade of the 21st century. Within this variety, it reveals a common vision shared by an array of Haitian artists. *Resilient Visions* included images of everyday life and historical scenes from artists who were labeled as Indigénistes for their representations of local subjects, and as primitivists for their lack of academic training. Also represented was a work by a Haitian artist who studied in France and embraced modernism and abstraction, and later social realism. Other works were created for the worship of Vodou spirits, or loa.

UNIVERSITY CLASSES

278 CLASS VISITS; 9,138 STUDENTS (UF + SFC)

278 Class Visits, 9,138 Students, 10 Colleges, 4 Centers

UF COLLEGES

- ▷ College of Agricultural and Life Sciences
- ▷ College of the Arts
- ▷ Heavener School of Business
- ▷ College of Design, Construction and Planning
- ▷ College of Education
- ▷ Herbert Wertheim College of Engineering
- ▷ College of Health and Human Performance
- ▷ College of Journalism and Communications
- ▷ College of Liberal Arts and Sciences
- ▷ College of Medicine



above: Pre College Program, School of Art + Art History, Summer 2018

UF CENTERS

- ▷ Center for African Studies
- ▷ Center for Latin American Studies
- ▷ Honors Program
- ▷ Innovation Academy

HIGHLIGHT COURSE

College of Medicine

Class: MDC 7140: Geriatrics/Rehabilitation Clerkship, taught by Dr. Mallory Otto

As a requirement of the Geriatrics Clerkship curriculum, medical students took part in a program at the Harn Museum of Art. Students visited the museum in small groups for a shared inquiry tour designed to refine skills in visual observation and critical thinking; strengthen empathy; highlight the value and use of ambiguity; explore knowledge-construction as a team process; and develop awareness of the museum as a mental-wellness resource. This year, 183 fourth year medical students participated.

ACQUISITIONS

Chinese
1870–1930
Ancestor Portrait
Ink and color on paper
2016.34
Bequest of Robert H. Axline Estate

Japanese
late 17th to 18th century
Daimyo
Ink and colors on paper
2017.37
Gift of Ed and Karen Rogan

Chinese
late 19th century
Summer Robe
Silk and gauze
2017.38
Gift of Joyce and Ted Strauss

Samoa
c.1945
Barkcloth (siapo)
Mulberry bark, pigment
2017.39.1
Gift of Robert Taber

Samoa
c.1945
Barkcloth (siapo)
Mulberry bark, pigment
2017.39.2
Gift of Robert Taber

Utagawa Yoshifuji
Edo period (1615–1868), 1880
Shinban neko no onsen
[Popular Hotspring Spa (of Cats)]
Color woodcut, ink and color
on paper
2017.40
Gift of William Knight Zewadski
Ippōsai Yoshifuji ga

Utagawa Hiroshige, Japanese, 1797–1858
(AKA. Ando Hiroshige)
after 1833–1834
Otsu, Hashirii chamise
(The running well teahouse)
Color woodcut
2017.41.1
Anonymous Gift

Tomikichiro Tokuriki
c. 1950s
Mount Fuji from Tateho, from the series
The Eight Views of Mt. Fuji
Color woodcut
2017.41.2
Anonymous Gift

Tateishi Harumi
Showa Period (1926 – 1989),
c. 1938
Raime (Thunderclap)
Silk with mineral pigments, sumi ink, and
gofun (or clam shell gesso)
2017.42
Museum purchase, funds provided by
the Robert H. and Kathleen M. Axline
Acquisition Endowment

Indian
early to mid-20th century
Votive Elephant and Divine Rider
Terra cotta
2017.43.1
Museum purchase, funds provided by
the David A. Cofrin Fund for Asian Art

Indian
early mid 20th c
Clay Horse
Terra cotta
2017.43.2
Museum purchase, funds provided by
the David A. Cofrin Fund for Asian Art

Indian
early to mid-20th century
Clay Elephant
Terra cotta
2017.43.3
Museum purchase, funds provided by the
David A. Cofrin Fund for Asian Art

Indian
early to mid-20th century
Figure
Terra cotta
2017.43.4
Museum purchase, funds provided by the
David A. Cofrin Fund for Asian Art

Thai
14th–16th century
Lidded Box
Stoneware
2017.43.5
Museum purchase, funds provided by the
David A. Cofrin Fund for Asian Art

Oguri Ken ichi
1877
Album of Landscapes and Calligraphy
Ink on paper
2017.44
Museum purchase, funds provided by
the Robert H. and Kathleen M. Axline
Acquisition Endowment



Kwame Akoto
2016
Self Portrait (Do not cry, Kwame)
Oil painting on wood
2017.45.1
Museum Purchase with funds provided
by the Caroline Julier and James G.
Richardson Acquisition Fund

above: Alice Neel, *Untitled*, 1980
Gift of the Estate of Charles T. Woods, Jr., 2017.54.3

Kwame Akoto
2016
Self Portrait (Thank you God for not making me a Log)
Oil painting on wood
2017.45.2
Museum Purchase with funds provided by the Caroline Julier and James G. Richardson Acquisition Fund

Leon Levinstein
c. 1960; printed later
Untitled (Prospect Park, Brooklyn)
Gelatin silver print
2017.46.1
Gift of John Erdman and Gary Schneider from the Helen Gee Collection

Leon Levinstein
1951; printed later
Untitled (screen, child in window, Lower East Side)
Gelatin silver print
2017.46.2
Gift of John Erdman and Gary Schneider from the Helen Gee Collection

Leon Levinstein
1958; printed later
Untitled (tattooed man, Coney Island)
Gelatin silver print
2017.46.3
Gift of John Erdman and Gary Schneider from the Helen Gee Collection

Leon Levinstein
1953; printed later
Untitled (bald men, Coney Island, Brooklyn)
Gelatin silver print
2017.46.4
Gift of John Erdman and Gary Schneider from the Helen Gee Collection

Leon Levinstein
Negative: 1979, printed later
Untitled (three African Americans)
Gelatin silver print
2017.46.5
Gift of John Erdman and Gary Schneider from the Helen Gee Collection

Leon Levinstein
1975; printed later
Untitled (Mardi Gras)
Gelatin silver print
2017.46.6
Gift of John Erdman and Gary Schneider from the Helen Gee Collection

Leon Levinstein
1954; printed later
Untitled (New York City)
Gelatin silver print
2017.46.7
Gift of John Erdman and Gary Schneider from the Helen Gee Collection

Leon Levinstein
c. 1955; printed later
Untitled (mother and child, Herald Square)
Gelatin silver print
2017.46.8
Gift of John Erdman and Gary Schneider from the Helen Gee Collection

Leon Levinstein
c. 1954; printed later
Untitled (Coney Island)
Gelatin silver print
2017.46.9
Gift of John Erdman and Gary Schneider from the Helen Gee Collection

Leon Levinstein
1974; printed later
Untitled (couple embracing)
Gelatin silver print
2017.46.10
Gift of John Erdman and Gary Schneider from the Helen Gee Collection

Leon Levinstein
1956; printed later
Untitled (two women, New York)
Gelatin silver print
2017.46.11
Gift of John Erdman and Gary Schneider from the Helen Gee Collection



above: Chinese artist, *Snuff bottle*, 1900–1930s
Gift of Charles and June Allen in memory of Hannah Cornelia Leffler, 2017.47.15

Yan Yutian
1900s
Snuff Bottle
Paint on glass, glass stopper
2017.47.1
Gift of Charles and June Allen in memory of Hannah Cornelia Leffler

Ma Shaoxian
1935
Snuff Bottle
Paint on glass, glass stopper
2017.47.2
Gift of Charles and June Allen in memory of Hannah Cornelia Leffler

Chinese
1900–1930s
Snuff Bottle
Glass with overlay
2017.47.3
Gift of Charles and June Allen in memory of Hannah Cornelia Leffler

Chinese
1900–1930s
Snuff Bottle
Glass with overlay
2017.47.4
Gift of Charles and June Allen in memory of Hannah Cornelia Leffler

Chinese
1900–1930s
Snuff Bottle
Glass with overlay
2017.47.5
Gift of Charles and June Allen in memory of Hannah Cornelia Leffler

Chinese
1900–1930s
Snuff Bottle
Glass with overlay
2017.47.6
Gift of Charles and June Allen in memory of Hannah Cornelia Leffler

Chinese
1900–1930s
Snuff Bottle
Glass with overlay
2017.47.7
Gift of Charles and June Allen in memory of Hannah Cornelia Leffler

Chinese
1900–1930s
Snuff Bottle
Paint on glass
2017.47.8
Gift of Charles and June Allen in memory
of Hannah Cornelia Leffler

Chinese
1900–1930s
Snuff Bottle
Paint on glass
2017.47.15
Gift of Charles and June Allen in memory
of Hannah Cornelia Leffler

Chinese
early 20th century
Snuff Bottle
Glass
2017.47.22
Gift of Charles and June Allen in memory
of Hannah Cornelia Leffler

Chinese
1900–1930s
Snuff Bottle
Paint on glass
2017.47.9
Gift of Charles and June Allen in memory
of Hannah Cornelia Leffler

Chinese
1900–1930s
Snuff Bottle
Paint on glass
2017.47.16
Gift of Charles and June Allen in memory
of Hannah Cornelia Leffler

Chinese
Late 19th early 20th century
Snuff Bottle
Amber
2017.47.23
Gift of Charles and June Allen in memory
of Hannah Cornelia Leffler

Chinese
1900–1930s
Snuff Bottle
Paint on glass
2017.47.10
Gift of Charles and June Allen in memory
of Hannah Cornelia Leffler

Chinese
early 20th c (1900–1930s)
Snuff Bottle
Paint on glass
2017.47.17
Gift of Charles and June Allen in memory
of Hannah Cornelia Leffler

Chinese
late 19th and early 20th century
Snuff Bottle
Hard stone
2017.47.24
Gift of Charles and June Allen in memory
of Hannah Cornelia Leffler

Chinese
1900–1930s
Snuff Bottle
Paint on glass
2017.47.11
Gift of Charles and June Allen in memory
of Hannah Cornelia Leffler

Chinese
early 20th century
Snuff Bottle
Paint on glass
2017.47.18
Gift of Charles and June Allen in memory
of Hannah Cornelia Leffler

Chinese
19th century
Snuff Bottle
Hard stone
2017.47.25
Gift of Charles and June Allen in memory
of Hannah Cornelia Leffler

Chinese
1900–1930s
Snuff Bottle
Paint on glass
2017.47.12
Gift of Charles and June Allen in memory
of Hannah Cornelia Leffler

Chinese
early 20th century (1900–1930s)
Snuff Bottle
Paint on glass
2017.47.19
Gift of Charles and June Allen in memory
of Hannah Cornelia Leffler

Yan Yutian
1900s
Snuff Bottle
Paint on glass
2017.47.26
Gift of Charles and June Allen in memory
of Hannah Cornelia Leffler

Chinese
1900–1930s
Snuff Bottle
Paint on glass
2017.47.13
Gift of Charles and June Allen in memory
of Hannah Cornelia Leffler

Chinese
1930s
Snuff Bottle
Paint on glass
2017.47.20
Gift of Charles and June Allen in memory
of Hannah Cornelia Leffler

Benedict J. Fernandez
April 15, 1967
**Martin Luther King, April 15, 1967, UN
Headquarters**
Gelatin silver print
2017.48
Gift of Jerry Uelsmann

Chinese
1890–1930s
Snuff Bottle
Glass
2017.47.14
Gift of Charles and June Allen in memory
of Hannah Cornelia Leffler

Chinese
late 19th and early 20th century
Snuff Bottle
Glass
2017.47.21
Gift of Charles and June Allen in memory
of Hannah Cornelia Leffler

Samuel Songo
1957
Untitled
Watercolor
2017.49
Gift in memory of Elliot and Eleanor
Bergman

Chinese
1900–1911
Pair of Embroidered Landscapes
Silk on paper mounted as hanging scrolls pair
2017.50.1
Gift in memory of Elliot and Eleanor Bergman

Chinese
1900–1911
Embroidered Textile Panel
Silk embroidery on silk backing
2017.50.2
Gift in memory of Elliot and Eleanor Bergman

Chinese
1900–1911
Embroidered Textile Panel
Silk embroidery on silk backing
2017.50.3
Gift in memory of Elliot and Eleanor Bergman

Chinese
1900–1911
Basket Embroidery with Flowers
Silk on silk backing
2017.50.4
Gift in memory of Elliot and Eleanor Bergman

Japanese
1900–1912
Pair of Embroidered Figural Portraits
Silk on mounting
2017.51
Gift in memory of Elliot and Eleanor Bergman

George Afedzi Hughes
2009–2010
Time Cycles
Mixed media (oil, acrylic and enamel paint, collage on canvas)
2017.52
Museum Purchase with Funds from the Caroline Julier and James G. Richardson Acquisition Fund

Felipe Castañeda
n.d.
La Espera (The Wait)
Bronze
2017.53.1
Gift of Rita Horbar in memory of Stanley S. Horbar

Adolf Arthur Dehn
n.d.
Pennsylvania Barn
Watercolor on paper
2017.53.2
Gift of Rita Horbar in memory of Stanley S. Horbar

Charles Levier
c 1950s
Le Pont
Oil on canvas
2017.53.3
Gift of Rita Horbar in memory of Stanley S. Horbar

Dale Chihuly
n.d.
Untitled
Screen print on paper
2017.53.4
Gift of Rita Horbar in memory of Stanley S. Horbar

Will Barnet
1977
Aurora
Screen print on paper
2017.53.5
Gift of Rita Horbar in memory of Stanley S. Horbar

Jerry Uelsmann
1968
Turtle Blessing
Toned gelatin silver print made from multiple negatives
2017.54.1
Gift of the Estate of Charles T. Woods, Jr.



left: Miguel Gandert, *Tanya Trujillo Talpa, NM*, 1995
Gift of Andrew Smith and Claire Lozier, 2010.87.12

Douglas Prince
1972
Floating Fan
Photo sculpture
2017.54.2
Gift of the Estate of Charles T. Woods, Jr.

Alice Neel
1980
Untitled
Lithograph on paper
2017.54.3
Gift of the Estate of Charles T. Woods, Jr.

Ellen Auerbach
1935
Slums, London
Gelatin silver print
2017.55.1
Gift of Edward R. and Joanne Block

Ellen Auerbach
1940
Elaine and Bill de Kooning
Gelatin silver print
2017.55.2
Gift of Edward R. and Joanne Block

Ellen Auerbach
1935
Bertolt Brecht, Typing, London
Gelatin silver print
2017.55.3
Gift of Edward R. and Joanne Block

Ellen Auerbach
1957, printed 1992
Eliot Porter in New York
Gelatin silver print
2017.55.4
Gift of Edward R. and Joanne Block

Ellen Auerbach
c. 1945
W. de Kooning
Gelatin silver prints
2017.55.5
Gift of Edward R. and Joanne Block

Ellen Auerbach
Eliot Furness Porter
1956
Market, Merida, Mexico (man with oranges)
Dye transfer
2017.55.6
Gift of Edward R. and Joanne Block

Ellen Auerbach
Eliot Furness Porter
1955–1956
Oaxaca, Mexico (man with flowers)
Dye transfer
2017.55.7
Gift of Edward R. and Joanne Block

Ellen Auerbach
Eliot Furness Porter
1955–1956
Patzcuaro, Mexico (women & children w/ watermelon)
Dye transfer
2017.55.8
Gift of Edward R. and Joanne Block

Ellen Auerbach
Eliot Furness Porter
1956
Strawberry Woman, Morelia, Mexico
Dye transfer
2017.55.9
Gift of Edward R. and Joanne Block

Yuki Nakaigawa
2010
A Heave to Unfold
Glazed stoneware
2017.56.1
Gift of Carol and Jeffrey Horvitz

Hakuko Ono
c. 1990
Yurikinsai tsubo (Vase with underglaze gold decoration)
Glazed porcelain with metal foil patterning
2017.56.2
Gift of Carol and Jeffrey Horvitz

Tokuda Yasokichi IV
2010
Ouran 2
Porcelain with saiyu glaze gradation
2017.56.3
Gift of Carol and Jeffrey Horvitz

Tomomi Tanaka
2015
Black Flame
Stoneware
2017.56.4
Gift of Carol and Jeffrey Horvitz

Asuka Tsuboi
2015
Refined Silk, Kyoto Wave (Neriginu: Kyo No Nami)
Glazed stoneware
2017.56.5
Gift of Carol and Jeffrey Horvitz

Makonde Artist
mid late 20th century
Mask (n'dimu or lipiko)
Wood, pigment, human hair, plastic or vinyl
2017.57.1
Gift of Charles Jones African Art

Ewe Artist
mid 20th century
Man's wrapper (adanudo)
Cotton
2017.57.2
Gift of Charles Jones African Art

Russian
20th century
Caucasian dagger with scabbard (kindjal)
Metal, inlay, paint
2017.58
Gift of Kenneth and Laura Berns

Chinese
19th century
Bamboo Jacket
Bamboo, silk
2017.59.1
Gift of Harold R. (Rudy) Gertner, Jr., M.D., and Cathy Morris Gertner

Indian, Gujarat
Late 19th/Early 20th century
Hand fan (balwas)
Opaque and clear beads, mirror, thread, wood, metal, leather, cotton
2017.59.2
Gift of Harold R. (Rudy) Gertner, Jr., M.D., and Cathy Morris Gertner

Indian, Gujarat
Late 19th/Early 20th century
Hand fan (balwas)
Opaque and clear beads, mirror, thread, wood, metal, leather, cotton
2017.59.3
Gift of Harold R. (Rudy) Gertner, Jr., M.D., and Cathy Morris Gertner

Indian, Gujarat
Late 19th/Early 20th century
Hand fan (balwas)
Opaque and clear beads, mirror, thread,
wood, metal, leather, cotton mesh
2017.59.4
Gift of Harold R. (Rudy) Gertner, Jr., M.D.,
and Cathy Morris Gertner

Indian, Gujarat
Late 19th/Early 20th century
Hand fan (balwas)
Opaque and clear beads, mirror, thread,
wood, metal, leather, cotton
2017.59.5
Gift of Harold R. (Rudy) Gertner, Jr., M.D.,
and Cathy Morris Gertner

Indian, Gujarat
Late 19th/Early 20th century
Hand fan (balwas)
Opaque and clear beads, mirror, thread,
wood, metal, leather, cotton
2017.59.6
Gift of Harold R. (Rudy) Gertner, Jr., M.D.,
and Cathy Morris Gertner

Indian, Gujarat
Late 19th/Early 20th century
Hand fan (balwas)
Opaque and clear beads, mirror, thread,
wood, metal, leather, cotton
2017.59.7
Gift of Harold R. (Rudy) Gertner, Jr., M.D.,
and Cathy Morris Gertner

Yombe Artist
Late 19th/Early 20th century
Dance Scepter (Thafu Maluangu)
Wood, vegetal fiber, nuts, traces of white
pigment
2017.60
Gift of Jerelyn Fyvolent

Imperial Noble Consort Dunhui
1910s
Calligraphy
Hanging scroll, ink on paper
2017.61
Museum purchase, funds provided by the
David A. Cofrin Fund for Asian Art

Yangtze Tong (Grace Tong)
1972
Calligraphy
Hanging scroll, ink on paper
2017.62
Museum purchase, funds provided by the
David A. Cofrin Fund for Asian Art

Japanese
17th century, Early Edo period
Set of five masu cups
Carved and pegged Japanese
cypress wood
2017.63
Museum purchase, funds provided by
the Robert H. and Kathleen M. Axline
Acquisition Endowment

Japanese
19th c.
Album of Landscapes and Calligraphy
Ink and color on paper
2017.64.1
Museum purchase, funds provided by the
David A. Cofrin Fund for Asian Art

Japanese
19th c.
Album of Landscapes and Calligraphy
Ink and color on paper
2017.64.2
Museum purchase, funds provided by the
David A. Cofrin Fund for Asian Art

Tibetan
19th 20th century
Mandala
Gold and colors on black ground
2017.65.1
Gift of Daphne Lange Rosenzweig

Chinese
19th 20th century
Rubbing
Paper with black ink
2017.65.2
Gift of Daphne Lange Rosenzweig

Korin School
18th century
**Two Panel Floral Screen with
Chrysanthemums**
Ink and color on paper
2017.66
Gift of Carol B. Davenport in Memory of
David W. Davenport

Georges Braque
1962
**Oiseau de nuit noir (Bird of the Dark
Night)**
Color woodcut
2017.67
Gift of Dr. Sidney and Mrs. Barbara Pactor
in memory of their daughter Elizabeth
Ann Pactor

Stephen Dupont
2006
**Untitled, from the series Axe
Me Biggie**
Gelatin silver print made from positive
Polaroid negative
2017.69.1
Museum purchase with funds provided
by the Melvin and Lorna Rubin Fund



Stephen Dupont
2006
**Untitled, from the series Axe
Me Biggie**
Gelatin silver print made from original
Polaroid
2017.69.2
Museum purchase with funds provided
by the Melvin and Lorna Rubin Fund

Do Ho Suh
2002
Floor
Iris print with colors
2017.70
Gift in honor of The Quinn Family
Charitable Foundation

above: Oumou Sy, *Jewelry Ensemble: Hair
Ornaments, Earrings, Necklace, Ring, Bracelet*
2017–2018, Museum purchase with funds from the
Caroline Julier and James G. Richardson Acquisition
Fund, 2017.80

Mori Kansai
19th century
Kyoto Scenes
Ink and color on paper
2017.71.1
Museum purchase, funds provided by the David A. Cofrin Fund for Asian Art and the Robert H. and Kathleen M. Axline Acquisition Endowment

Kunii Oyo
Late 19th/Early 20th century
Painting Album
Ink and color on paper
2017.71.2
Museum purchase, funds provided by the David A. Cofrin Fund for Asian Art and the Robert H. and Kathleen M. Axline Acquisition Endowment

Japanese
19th century
Landscape Album
Ink and color on paper
2017.71.3
Museum purchase, funds provided by the David A. Cofrin Fund for Asian Art and the Robert H. and Kathleen M. Axline Acquisition Endowment

Burriss Jenkins Jr.
early to mid-1950s
Father and Son
Pencil on paper
2017.72
Gift of Rick Medina and Teina Phillips

Chinese
late 19th c
Immortal Mounted on Lion
Ivory
2017.73.1
Gift of Rick Medina and Teina Phillips in memory of General and Mrs. Francis T. Pachler

Chinese
late 19th c
Immortal Mounted on Deer with Cat
Ivory
2017.73.2
Gift of Rick Medina and Teina Phillips in memory of General and Mrs. Francis T. Pachler

Chinese
late 19th c
Immortal Mounted on Mythological Beast with Flower
Ivory
2017.73.3
Gift of Rick Medina and Teina Phillips in memory of General and Mrs. Francis T. Pachler

Chinese
late 19th c
Immortal Mounted on Elephant with Bird
Ivory
2017.73.4
Gift of Rick Medina and Teina Phillips in memory of General and Mrs. Francis T. Pachler

Franz Marc
c. 1912
Lake with Reflection of Trees
Watercolor on paper
2017.74.1
Gift of Rick Medina and Teina Phillips in memory of Patricia and Robert Stanley

Franz Marc
1908
Two Deer in the Woods
Watercolor on paper
2017.74.2
Gift of Rick Medina and Teina Phillips in memory of Patricia and Robert Stanley

Tikar Artist
20th century
Female Figure
Wood, brass, fiber, white pigment
2017.75.1
Gift of Drs. John and Nicole Dintenfass

Senufo Artist
20th century
Ceremonial drum for Tyekpa Society
Wood, hide, porcupine quills, fiber, cloth, unidentified substances
2017.75.2
Gift of Drs. John and Nicole Dintenfass

Jesse Aaron
late 20th century
Smiling Cat
Wood, buttons
2017.76.1
Gift of Josh Feldstein

Jerry Coker
late 20th century
Untitled
Metal
2017.76.2
Gift of Josh Feldstein

Jerry Coker
1997
Untitled [Mermaid mask]
Tin, metal and paint
2017.76.3
Gift of Josh Feldstein

Alyne Harris
late 20th century
Church
Acrylic on canvas
2017.76.4
Gift of Josh Feldstein

Alyne Harris
late 20th century
Sloths
Acrylic on board
2017.76.5
Gift of Josh Feldstein

Alyne Harris
late 20th century
Family with Angels
Acrylic on board
2017.76.6
Gift of Josh Feldstein

Alyne Harris
late 20th century
Untitled [Fox]
Acrylic on canvas panel
2017.76.7
Gift of Josh Feldstein

Eddy "Mr. Eddy" Mumma
late 20th century
Jesus
Paint
2017.76.8
Gift of Josh Feldstein

Eddy "Mr. Eddy" Mumma
late 20th century
Woman with Flowers
Paint
2017.76.9
Gift of Josh Feldstein

Eddy "Mr. Eddy" Mumma
late 20th century
Untitled
Paint on Masonite
2017.76.10
Gift of Josh Feldstein

Danny Lyon
Neg: 1968, print: 2011
The Line, Ferguson Unit, Prison Farm, Midway, TX
Gelatin silver print
2017.77.1
Gift of Thomas J. Wilson and Jill Garling

Danny Lyon
Neg: 1968, print: 2011
Huntsville, Texas. Diagnostic Processing Center for inmates entering prison
Gelatin silver print
2017.77.2
Gift of Thomas J. Wilson and Jill Garling

Danny Lyon
Neg: 1968, print: 2011
Two years, burglary, Ferguson Unit, Prison Farm, Midway, TX
Gelatin silver print
2017.77.3
Gift of Thomas J. Wilson and Jill Garling

Danny Lyon
Neg: 1968, print: 2011
Norris Mundy, from Montreal, five years and an eight year federal hold, The Walls, Huntsville, TX
Gelatin silver print
2017.77.4
Gift of Thomas J. Wilson and Jill Garling

Danny Lyon
Neg: 1968, print: 2011
Texas prison rodeo, The Walls, Huntsville, TX
Gelatin silver print
2017.77.5
Gift of Thomas J. Wilson and Jill Garling

Danny Lyon
Neg: 1968, print: 2011
Ramsey Unit, Prison Farm, Rosharon, TX
Gelatin silver print
2017.77.6
Gift of Thomas J. Wilson and Jill Garling

Jacques Lowe
c. 1955
Cape Canaveral Space Center, Florida (four technicians)
Gelatin silver print
2017.77.7
Gift of Thomas J. Wilson and Jill Garling

Jacques Lowe
c. 1955
Cape Canaveral Space Center, Florida (man, possibly Mercury 7astronaut Scott Carpenter, in specialty suit with fighter jets behind)
Gelatin silver print
2017.77.8
Gift of Thomas J. Wilson and Jill Garling

Jacques Lowe
c. 1955
Cape Canaveral Space Center, Florida (military technician climbing down tower) (diptych)
Gelatin silver print
2017.77.9
Gift of Thomas J. Wilson and Jill Garling



Jacques Lowe
c. 1955
Atlantic Aviation, Coco Beach, FL (worker driving cart towards small airplane)
Gelatin silver print
2017.77.10
Gift of Thomas J. Wilson and Jill Garling

Jacques Lowe
c. 1955
Atlantic Aviation, Cocoa Beach, FL (two technicians repairing plane turbine)
Gelatin silver print
2017.77.11
Gift of Thomas J. Wilson and Jill Garling

Jacques Lowe
c. 1955
Atlantic Aviation, Cocoa beach, FL (three technicians repairing small plane)
Gelatin silver print
2017.77.12
Gift of Thomas J. Wilson and Jill Garling

Flip Schulke
1961
Elderly woman picking through hurricane debris
Gelatin silver print
2017.77.13
Gift of Thomas J. Wilson and Jill Garling

Flip Schulke
1961
Men digging through hurricane debris
Gelatin silver print
2017.77.14
Gift of Thomas J. Wilson and Jill Garling

Flip Schulke
1961
Two men in life jackets standing on hurricane debris
Gelatin silver print
2017.77.15
Gift of Thomas J. Wilson and Jill Garling

Flip Schulke
1961
Woman leaning out of a window in a damaged house
Gelatin silver print
2017.77.16
Gift of Thomas J. Wilson and

left: Carleton E. Watkins, *Glacier Point, 3,257 feet, Yosemite, California*, c. 1870, Museum purchase with funds provided by the Melvin and Lorna Rubin Endowment, 2005.43.1

Jill Garling
Flip Schulke
1961
Mothers with children carrying pillows and baskets through a flooded sidewalk
Gelatin silver print
2017.77.17
Gift of Thomas J. Wilson and
Jill Garling

Flip Schulke
1961
Rescue team carrying wounded person out of hurricane debris
Gelatin silver print
2017.77.18
Gift of Thomas J. Wilson and
Jill Garling

Flip Schulke
1961
Woman standing in a damaged house
Gelatin silver print
2017.77.19
Gift of Thomas J. Wilson and
Jill Garling

Flip Schulke
1961
Rescue team pulling a man out of hurricane debris
Gelatin silver print
2017.77.20
Gift of Thomas J. Wilson and
Jill Garling

Flip Schulke
1961
Damaged hotel surrounded by hurricane debris
Gelatin silver print
2017.77.21
Gift of Thomas J. Wilson and
Jill Garling

Flip Schulke
1961
Man sitting in damaged hotel surrounded by hurricane debris
Gelatin silver print
2017.77.22
Gift of Thomas J. Wilson and

Jill Garling
Flip Schulke
1961
Waves crashing against boardwalk and Murdoch's Bathhouse
Gelatin silver print
2017.77.23
Gift of Thomas J. Wilson and
Jill Garling

Flip Schulke
1961
Rescue team carrying a child in flood water and hurricane debris
Gelatin silver print
2017.77.24
Gift of Thomas J. Wilson and
Jill Garling

Flip Schulke
1961
Waves crashing halfway up lamp posts
Gelatin silver print
2017.77.25
Gift of Thomas J. Wilson and
Jill Garling

Flip Schulke
1961
Waves crashing against boardwalk and hurricane debris
Gelatin silver print
2017.77.26
Gift of Thomas J. Wilson and
Jill Garling

Flip Schulke
1961
Waves crashing against boardwalk and Murdoch's Bathhouse
Gelatin silver print
2017.77.27
Gift of Thomas J. Wilson and
Jill Garling

Flip Schulke
1961
Waves crashing against boardwalk and Murdoch's Bathhouse
Gelatin silver print
2017.77.28
Gift of Thomas J. Wilson and

Jill Garling
Flip Schulke
1961
People walking away from abandoned cars in flood water
Gelatin silver print
2017.77.29
Gift of Thomas J. Wilson and
Jill Garling

Flip Schulke
1961
U.S. Marines' ship rescuing students outside a school surrounded by flood water
Gelatin silver print
2017.77.30
Gift of Thomas J. Wilson and
Jill Garling

Flip Schulke
1961
Man trudging through flood water and hurricane debris, Hurricane Carla, Galveston, Texas
Gelatin silver print
2017.77.31
Gift of Thomas J. Wilson and
Jill Garling

Flip Schulke
1961
Waves crashing against boardwalk and hurricane debris
Gelatin silver print
2017.77.32
Gift of Thomas J. Wilson and
Jill Garling

Flip Schulke
1961
Waves crashing against boardwalk and hurricane debris
Gelatin silver print
2017.77.33
Gift of Thomas J. Wilson and
Jill Garling

Flip Schulke
1961
Waves crashing against a condominium building
Gelatin silver print
2017.77.34
Gift of Thomas J. Wilson and
Jill Garling

Flip Schulke
1961

Maquette comprising three vintage gelatin silver prints affixed to a single board

Gelatin silver print
2017.77.35

Gift of Thomas J. Wilson and
Jill Garling

Haitian Artist
c. 1970

Devil Figure (dyab)

Papier mâché, paint
2017.78.1

Gift of Alvan and Barbara Bluhm

Haitian Artist
1970s

Cross

Cut out forged metal
2017.78.2

Gift of Alvan and Barbara Bluhm

Haitian Artist
late 1970s

Figure

Metal
2017.78.3

Gift of Alvan and Barbara Bluhm

Haitian Artist
late 1970s

flag (Drapo)

Cotton cloth, sequins, glass beads
2017.78.4

Gift of Alvan and Barbara Bluhm

Chinese

Late Qing dynasty (1644–1911), 19th
century to early 20th

Jade Ornament

Jade
2017.79.1

Gift of Marc A. Gale

Chinese

Late Qing dynasty (1644–1911), 19th
century to early 20th

Jade Ornament

Jade
2017.79.2

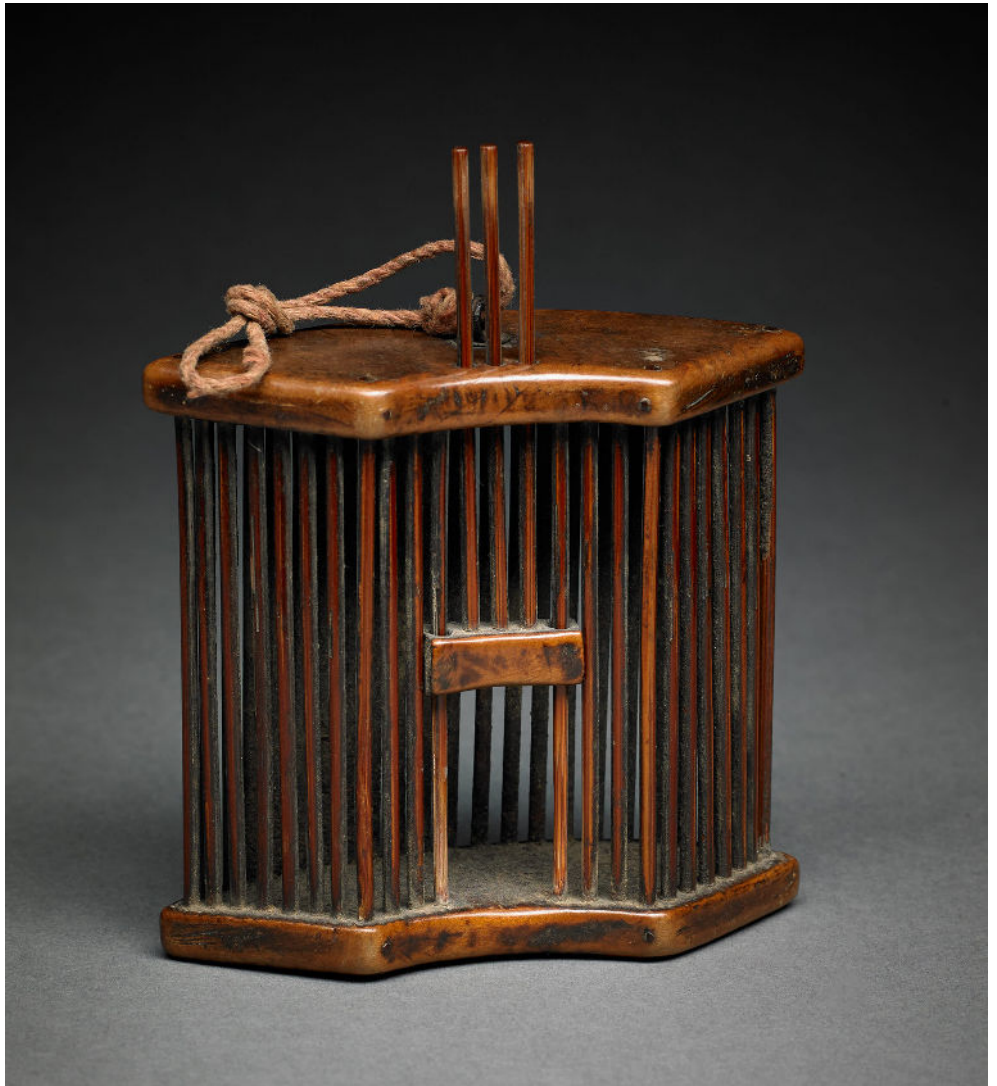
Gift of Marc A. Gale

Chinese

Late Qing dynasty (1644–1911), 19th
century to early 20th

Jade Ornament

Jade
2017.79.3



Gift of Marc A. Gale
Chinese

Late Qing dynasty (1644–1911), 19th
century to early 20th

Jade Ornament

Jade
2017.79.4

Gift of Marc A. Gale

Chinese

Late Qing dynasty (1644–1911), 19th
century to early 20th

Jade Ornament

Jade
2017.79.5

Gift of Marc A. Gale

Oumou Sy
2017–2018

**Jewelry Ensemble: Hair Ornaments,
Earrings, Necklace, Ring, Bracelet**

Silver, gold, fibers
2017.80

Museum purchase with funds from the
Caroline Julier and James G. Richardson

Acquisition Fund
Jerry Coker

n.d.

**A Few, Wintry Flowers in My
Summertime Heat**

Acrylic paint on canvas
2017.81.1

Gift of Donald N. Cavanaugh and Edward
G. Blue in memory of Mary Ann Green

Jerry Coker
n.d.

In the Land of the Giant Quapoe Trees

Acrylic paint on canvas
2017.81.2

Gift of Donald N. Cavanaugh and Edward

above: Chinese artist, *Cricket Cage*, late 19th cen.
Museum purchase, funds provided by the Gladys
Harn Harris Art Acquisition Endowment and the
Robert H. and Kathleen M. Axline Acquisition
Endowment, 2017.9.1

G. Blue in memory of Mary Ann Green
Alyne Harris
1993
Devils Robbing the Graveyard
Acrylic on canvas
2017.82.1
Gift of Donald N. Cavanaugh and Edward G. Blue

O. L. Samuels
c. 1990
Cross Breed
Wood, paint
2017.82.2
Gift of Donald N. Cavanaugh and Edward G. Blue

Lynsey Addario
2013
Killis Camp, Turkish/Syrian Border in Turkey, October 22, 2013
Archival pigment print
2018.2.1
Museum purchase, funds provided by the Melvin and Lorna Rubin Fund

Lynsey Addario
2017
Subduing the Korengal Valley, Afghanistan, October 2007
Archival pigment print
2018.2.2
Museum purchase, funds provided by the Melvin and Lorna Rubin Fund

Japanese
circa 1825–1850
Sake bottle (tokkuri)
Porcelain
2018.3
Museum purchase, funds provided by the Robert H. and Robert H. and Kathleen M. Axline Acquisition Endowment

Baule Artist
20th century
Flywhisk
Wood, gold leaf, horse hair, wool
2018.4
Museum purchase with funds provided by the Ruth P. Phillips Art Acquisition Endowment

Haitian Artist
2012
Vodou medicine packet for Damballah (Paket Kongo)
Cloth, feathers, thread, satin ribbon, unidentified substances
2018.5

Gift of Robin and Donna Poynor
Rania Matar
2014
Mohammed 7, Assaad 12, Beirut, Lebanon
Archival pigment print
2018.7.1
Museum purchase, funds provided by The Caroline Julier and James G. Richardson Acquisition Fund

Rania Matar
2006
On the Truck, Lebanese/Syrian Border
Archival pigment print
2018.7.2
Museum purchase, funds provided by The Caroline Julier and James G. Richardson Acquisition Fund

Lori Nix
2017
Winter Monument
Archival pigment print
2018.8
Museum purchase, funds provided by The Caroline Julier and James G. Richardson Acquisition Fund

Taita Artist
late 20th century
Twined work basket (Kidasi)
Sisal, mrungua bark, natural pigments from mud and mkungo flower, woodash and salt, synthetic red dye from cigarette wrappers
2018.9.1
Gift of Roy Hunt

Taita Artist
late 20th century
Twined work basket (Kidasi)
Sisal, mrungua bark, natural pigments from mud and mkungo flower, woodash and salt
2018.9.2
Gift of Roy Hunt

Taita Artist
late 20th century
Twined work basket (Kidasi)
Sisal, mrungua bark, natural pigments from mud and mkungo flower, woodash and salt, synthetic red dye from cigarette wrappers
2018.9.3

Gift of Roy Hunt
Japanese
mid 17th century, Early Edo Period
Tokkuri or Sake bottle
Stoneware
2018.10
Museum purchase, funds provided by the David A. Cofrin Fund for Asian Art

Wang Yiting
n.d.
Bamboo and Oleander
Hanging scroll, ink on paper
2018.11
Museum purchase, funds provided by the Robert H. and Robert H. and Kathleen M. Axline Acquisition Endowment

Farah Nosh
2006
Aitaroun, Lebanon August 1, 2006
Archival pigment print
2018.12.1
Gift of Farah Nosh

Farah Nosh
2006
Ech Chabiye, Lebanon August 16, 2006
Archival pigment print
2018.12.2
Gift of Farah Nosh

Farah Nosh
2006 2009
Ali Yusif Karim
Archival pigment print
2018.12.3
Gift of Farah Nosh

Farah Nosh
2006
Baghdad, Iraq, 2006
Archival pigment print
2018.12.4
Gift of Farah Nosh

Farah Nosh
2009
Sadr, Iraq 2009
Archival pigment print
2018.12.5
Gift of Farah Nosh

Suzanne Opton
2018
Soldier: Bosiaki 364 Days in Iraq, 2004–2005
Archival pigment print
2018.13.1
Museum purchase, funds provided

by the David A. Cofrin Acquisition
Endowment
Suzanne Opton
2018

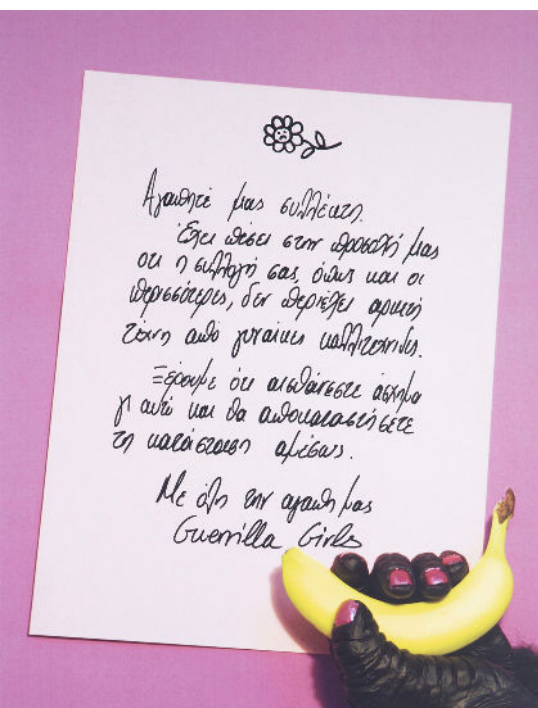
**Soldier: L. Jefferson Length of Service
Undisclosed, 2004–2005**

Archival pigment print
2018.13.2
Museum purchase, funds provided
by the David A. Cofrin Acquisition
Endowment

Simon Norfolk
2017

**Date Grove along Haifa Street, Atifya,
Northern Baghdad, April 2003**

Fuji crystal archive print
2018.15.1
Museum purchase, funds provided
by the David A. Cofrin Acquisition
Endowment



Simon Norfolk
2011, printed 2017

**A de-mining team from the Mine
Detection Centre in Kabul with a
member of the German Police who is
monitoring them**

Archival pigment inkjet print
2018.15.2
Museum purchase, funds provided

by the David A. Cofrin Acquisition
Endowment
Jennifer Karady
2009; printed 2018

**Former Sergeant Jose Adames, U.S.
Marine Corps Recon, Stinger Gunner,
1st Platoon, Alpha Company, veteran of
Operation Iraqi Freedom; Brooklyn, NY**

Chromogenic color print on Fujiflex
2018.16
Museum purchase, funds provided by
David A. Cofrin Acquisition Endowment
with additional support from Patricia
Chien and Family

Ben Lowy
2012

**Libyan residents walk through the
remains of buildings that have been
riddled by mortars and bullets, July 16,
2012, Sirte, Libya**

Archival pigment print
2018.17.1
Museum purchase, funds provided by the
Caroline Julier and James G. Richardson
Acquisition Fund

Ben Lowy
2012

**Women wait in line to vote in the first
free Libyan elections in decades, July 7,
2012, Benghazi, Libya**

Archival pigment print
2018.17.2
Museum purchase, funds provided by the
Caroline Julier and James G. Richardson
Acquisition Fund

Ben Lowy
2011

**The bodies of civilian and rebel
casualties are stored in the Jala
Hospital morgue in Benghazi, Libya**

Archival pigment print
2018.17.3
Museum purchase, funds provided by the
Caroline Julier and James G. Richardson
Acquisition Fund

Ben Lowy
2011–2012

**A Libyan man cries at the sight of at
least fifty burnt bodies in a construction
site shed near the base of the infamous
Khamis Brigade, Gaddafi's security
forces**

Archival pigment print
2018.17.4
Museum purchase, funds provided by the

Caroline Julier and James G. Richardson
Acquisition Fund
Ben Lowy
2011–2012

**Two Libyan women walk through a park
on the outskirts of Martyrs' Square,
seen through a bullet shattered window
in a Gaddafi government domestic
spy office**

Archival pigment print
2018.17.5
Museum purchase, funds provided by the
Caroline Julier and James G. Richardson
Acquisition Fund

Ben Lowy
2012

**Ali, age eighty three, an Internally
Displaced Person (IDP) from Tawergha,
stands outside his tent in a secluded
Displaced Persons camp in the desert,
July 9, 2012, near Benghazi, Libya**

Archival pigment print
2018.18.1
Gift of Ben Lowy

Ben Lowy
2012

**Samir, an Eritrean migrant, was shot
in Kufra, Libya, by a Libyan militia
member during his trek through the
desert; he lies on a mat in a migrant
camp, July 9, 2012, Benghazi, Libya**

Archival pigment print
2018.18.2
Gift of Ben Lowy

Ben Lowy
2011

**A car is torched, along with a Gaddafi
loyalist encampment, in the roundabout
outside the Bab al Aziziya compound**

Archival pigment print
2018.18.3
Gift of Ben Lowy

Ben Lowy
2011 2012

**Omar stands outside his family's bullet
riddled house in a neighborhood that
is home to Gaddafi loyalists, July 16,
2012, Sirte, Libya**

Archival pigment print

left: Guerrilla Girls, *Dear Art Collector Greek*, 2007
Museum Purchase, funds provided by the Caroline
Julier and James G. Richardson Acquisition
Endowment, 2015.47.77

- 2018.18.4
Gift of Ben Lowy
Gloriann Liu
2012; printed 2016
Dar Al Salam Rehabilitation Clinic, Reyhanli, Turkey, December, 2012
Digital C print
2018.20.1
Gift of Gloriann Liu
- Gloriann Liu
2012; print 2016
Mohammed and Daughter, Dara, Irbid, Jordan, December, 2012
Digital C print
2018.20.2
Gift of Gloriann Liu
- Gloriann Liu
2013; print 2016
Fawzia from Houla, Syria, in Reyhanli, Turkey, March, 2013
Digital C print
2018.20.3
Gift of Gloriann Liu
- Gloriann Liu
2011; print 2016
Marshallah, November, 2011
Digital C print
2018.20.4
Gift of Gloriann Liu
- Gloriann Liu
2011; print 2016
Mohammed Agha and Mohammad Zia Mama, November, 2011
Digital C print
2018.20.5
Gift of Gloriann Liu
- Gloriann Liu
2013; print 2016
Zarghona, visiting her home for the first time after a heavy snow, 2013
Digital C print
2018.20.6
Gift of Gloriann Liu
- Gloriann Liu
2013; print 2016
Atmeh Refugee Camp, Syria, March, 2013
Digital C print
2018.21
Museum purchase, funds provided by the
- Caroline Julier and James G. Richardson
Acquisition Fund
Gloriann Liu
2012; print 2016
The Buildings of U.N.R.W.A., March, 2012
Digital C print
2018.22
Museum purchase, funds provided by the Caroline Julier and James G. Richardson Acquisition Fund, with additional support provided by Ann Johns in honor of her husband David Johns
- Eman Mohammed
2008; printed 2016
Palestinian relatives mourn Lama Hamdan, December 2008
Archival pigment print
2018.23.1
Gift of Eman Mohammed
- Eman Mohammed
2008; printed 2016
Anguish outside Al Saraya police compound, December 28, 2008
Archival pigment print
2018.23.2
Gift of Eman Mohammed
- Eman Mohammed
2006; printed 2016
Mohammed Khader, a Palestinian construction worker, feeds pigeons in front of the remains of his house, March 2006
Archival pigment print
2018.24.1
Museum purchase, funds provided by the Caroline Julier and James G. Richardson Acquisition Fund
- Eman Mohammed
n.d.
Baraa Azam sits in front of his ruined house
Archival pigment print
2018.24.2
Museum purchase, funds provided by the Caroline Julier and James G. Richardson Acquisition Fund
- Daniel Stepp
2009
Bathroom
Oil on MDF board
2018.26
- Gift of Héctor Puig in honor of Dr. Rebecca Nagy's retirement
James Fee
1995
Boat Harbor, San Felipe, Mexico
Toned gelatin silver print
2018.27
Museum purchase, funds provided by the Melvin and Lorna Rubin Fund
- James Fee
image: 1995, print: 1997
San Francisco Sky
Toned silver gelatin print
2018.28
Museum purchase, funds provided by the Melvin and Lorna Rubin Fund
- Neagiri Tomiji
c. 1922–1935
Mother Cat and Kittens
Painted on silk in sumi ink, gofun or clam shell gesso and mineral pigments with roiro mirror polished, black lacquer frames
2018.29.1
Gift of Kagedo Japanese Art
- Mio Goseki
c. 1907–1926
Pair of Tiger Studies Screens
Painted on silk over gold (urahaku), gofun or clam shell gesso and mineral pigments
2018.29.2
Gift of Kagedo Japanese Art
- Yun Bing
17th century
2018.30
Museum purchase, funds provided by the David A. Cofrin Fund for Asian Art
- Lin Puqing
1848
Lady by the Window
Ink and color on silk, mounted as hanging scroll
2018.31.1
Museum purchase, funds provided by the David A. Cofrin Fund for Asian Art
- Kang Tongbi
1934
Fishing on the Misty River
Ink on paper, mounted as hanging scroll
2018.31.2
Museum purchase, funds provided by the David A. Cofrin Fund for Asian Art

Louis Comfort Tiffany
Tiffany Studios
Early 20th century
Stemmed Vase
Favrile glass
2018.32.1
Gift of Relf and Mona Crissey

Louis Comfort Tiffany
Tiffany Studios
Early 20th century
Flower Form Stemmed Vase
Favrile glass
2018.32.2
Gift of Relf and Mona Crissey

Louis Comfort Tiffany
Tiffany Studios
Early 20th century
Vase
Favrile glass
2018.32.3
Gift of Relf and Mona Crissey

Louis Comfort Tiffany
Tiffany Studios
Early 20th century
Flower Form Vase
Favrile glass
2018.32.4
Gift of Relf and Mona Crissey

Louis Comfort Tiffany
Tiffany Studios
Early 20th century
Ribbed Vase
Favrile glass
2018.32.5
Gift of Relf and Mona Crissey

Louis Comfort Tiffany
Tiffany Studios
Early 20th century
Candlestick
Favrile glass and bronze
2018.32.6
Gift of Relf and Mona Crissey

Louis Comfort Tiffany
Tiffany Studios
Early 20th century
Candlestick
Favrile glass and bronze
2018.32.7
Gift of Relf and Mona Crissey

Louis Comfort Tiffany
Tiffany Studios
Early 20th century
Flower Form Stemmed Vase
Favrile glass
2018.32.8
Gift of Relf and Mona Crissey

Louis Comfort Tiffany
Tiffany Studios
Early 20th century
Flower Form Stemmed Vase
Favrile glass
2018.32.9
Gift of Relf and Mona Crissey

Louis Comfort Tiffany
Tiffany Studios
Early 20th century
Bud Vase
Favrile glass
2018.32.10
Gift of Relf and Mona Crissey

Louis Comfort Tiffany
Tiffany Studios
Early 20th century
Bud Vase
Favrile glass
2018.32.11
Gift of Relf and Mona Crissey

Louis Comfort Tiffany
Tiffany Studios
Early 20th century
Vase with Wavy Pattern
Favrile glass
2018.32.12
Gift of Relf and Mona Crissey

Louis Comfort Tiffany
Tiffany Studios
Early 20th century
Ribbed Vase
Favrile glass
2018.32.13
Gift of Relf and Mona Crissey

below: Edward S. Curtis, *Carlos-Rios Papago Chief*
1907, Gift of Joseph Zimmerman, 2008.53.3



<p>Louis Comfort Tiffany Tiffany Studios Early 20th century Vase with Floral Motif Favrile glass 2018.32.14 Gift of Relf and Mona Crissey</p>	<p>Frederick Carder Steuben Glass, of Corning Glass Works Early 20th century Vase Gold Aurene glass 2018.32.21 Gift of Relf and Mona Crissey</p>	<p>Frederick Carder Steuben Glass, of Corning Glass Works Early 20th century Tree Trunk Bud Vase Gold Aurene glass 2018.32.28 Gift of Relf and Mona Crissey</p>
<p>Louis Comfort Tiffany Tiffany Studios Early 20th century Bud Vase Favrile glass 2018.32.15 Gift of Relf and Mona Crissey</p>	<p>Frederick Carder Steuben Glass, of Corning Glass Works Early 20th century Bowl Gold Calcite glass 2018.32.22 Gift of Relf and Mona Crissey</p>	<p>Frederick Carder Steuben Glass, of Corning Glass Works Early 20th century Vase with Reed Design Glass 2018.32.29 Gift of Relf and Mona Crissey</p>
<p>Louis Comfort Tiffany Tiffany Studios Early 20th century Bud Vase Favrile glass 2018.32.16 Gift of Relf and Mona Crissey</p>	<p>Frederick Carder Steuben Glass, of Corning Glass Works Early 20th century Bowl Gold Aurene glass 2018.32.23 Gift of Relf and Mona Crissey</p>	<p>Lalique et Cie René Jules Lalique c. 1927 Rampillon Vase Opalescent glass 2018.32.30 Gift of Relf and Mona Crissey</p>
<p>Frederick Carder Steuben Glass, of Corning Glass Works Early 20th century Stemmed Bud Vase Glass 2018.32.17 Gift of Relf and Mona Crissey</p>	<p>Frederick Carder Steuben Glass, of Corning Glass Works Early 20th century Handled Basket Calcite and Aurene glass 2018.32.24 Gift of Relf and Mona Crissey</p>	<p>Hubert Phipps 2014 Geometric No. 1 Stainless steel and plaster 2018.33.1 Gift of Iris Brasington McWilliams and Jackson Campbell May</p>
<p>Frederick Carder Steuben Glass, of Corning Glass Works Early 20th century Handled Vase Gold Aurene glass 2018.32.18 Gift of Relf and Mona Crissey</p>	<p>Frederick Carder Steuben Glass, of Corning Glass Works Early 20th century Oriental Jade Vase Iridescent glass 2018.32.25 Gift of Relf and Mona Crissey</p>	<p>Hubert Phipps 2002 Music Ink on paper 2018.33.2 Gift of Iris Brasington McWilliams and Jackson Campbell May</p>
<p>Frederick Carder Steuben Glass, of Corning Glass Works Early 20th century Vase Blue Aurene glass 2018.32.19 Gift of Relf and Mona Crissey</p>	<p>Frederick Carder Steuben Glass, of Corning Glass Works Early 20th century Perfume bottle Blue Aurene glass 2018.32.26 Gift of Relf and Mona Crissey</p>	<p>Sälämon Bällachäw early 1950s Battle of Säggälé Tempera on rawhide 2018.34 Gift of the Peter Garretson Family</p>
<p>Frederick Carder Steuben Glass, of Corning Glass Works Early 20th century Bowl Glass 2018.32.20 Gift of Relf and Mona Crissey</p>	<p>Frederick Carder Steuben Glass, of Corning Glass Works Early 20th century Ribbed Vase Blue Aurene glass 2018.32.27 Gift of Relf and Mona Crissey</p>	<p>Terry Evans Image: 2003; print 2005 Countryside Landfill, Grayslake County, August 24, 2003 Pigment print 2018.35 Gift courtesy of Terry Evans and Catherine Edelman Gallery</p>

Terry Evans
Negative: 1997; print 2018
East of Crosby, North Dakota, October 15, 1997
Pigment print
2018.36.1
Museum purchase, funds provided by David A. Cofrin Acquisition Endowment

Terry Evans
Negative: 2003; print 2005
Steel Mill, ISG Indiana Harbor Blast Furnaces H3 and H4, East Chicago, Indiana, May 12, 2003
Pigment print
2018.36.2
Museum purchase, funds provided by David A. Cofrin Acquisition Endowment

Terry Evans
Negative: 2009; print 2018
Train north of Matfield Green, Chase County, Kansas, July 2009
Pigment print
2018.36.3
Museum purchase, funds provided by David A. Cofrin Acquisition Endowment

Leonard Kesl
1966
Christ Removed
Ink and paper
2018.38
Gift of Charlotte Kesl in honor of her father, Lennie Kesl

Van Deren Coke
1957
Fish in the Fog
Gelatin silver print
2018.40
Gift of Charles T. O'Neal

André Kertész
1984
Untitled (gallery owner, Agatha Gaillard, Paris)
Vintage gelatin silver print; double weight air dried, glossy
2018.41.1
Gift of Lisa Finn

André Kertész
1984
Untitled (gallery owner, Agatha Gaillard, Paris)
Vintage gelatin silver print; double weight air dried, glossy
2018.41.2
Gift of Lisa Finn

André Kertész
1927
Artist's Studio, Paris
Gelatin silver print; printed later; double weight air dried glossy
2018.41.3
Gift of Lisa Finn

André Kertész
1977
Untitled (acrobat doing handstand, Beaubourg, Paris)
Vintage gelatin silver print; double weight air dried, glossy
2018.41.4
Gift of Lisa Finn

André Kertész
1944
Central Park, New York
Vintage gelatin silver print
2018.41.5
Gift of Lisa Finn

André Kertész
1959
Christus protected, New York (man repairing roof, box on statue head)
Gelatin silver print; printed later; double weight air dried glossy
2018.41.6
Gift of Lisa Finn

André Kertész
1928
Tuileries, Paris
Gelatin silver print; printed later
2018.41.7
Gift of Lisa Finn

Kara Walker
2017
Resurrection Story without Patrons
Etching with aquatint, sugar life, spit bite and dry point, printed on Hahnemuhle Copperplate Bright White 400gsm paper
2018.42
Museum purchase with funds provided by the Caroline Julier and James G. Richardson Acquisition Fund

Nick Cave
2018
Arm Peace
Cast bronze, vintage sunburst and tole flowers
2018.43
Museum purchase with funds provided by the David A. Cofrin Acquisition Endowment and the Caroline Julier and James G. Richardson Acquisition Fund

Joni Sternbach
Negative: 2014 Print: 2017
01.12.26 #1
Archival pigment print made from 5x7 film negative
2018.45.1
Museum purchase, funds provided by David A. Cofrin Acquisition Endowment



above: Leon Levinstein, *Untitled (New York City)*, 1954, Gift of John Erdman and Gary Schneider from the Helen Gee Collection, 2017.46.7

Joni Sternbach
2014
14.09.02 #5+4 Tom, Bodhi, + Jack
Tintype diptych
2018.45.2
Museum purchase, funds provided by
David A. Cofrin Acquisition Endowment

Didier Viodé
2016
Les Migrants
Ink on paper
2018.47.1
Museum purchase with funds provided
by the Caroline Julier and James G.
Richardson Acquisition Fund

Didier Viodé
2018
Les Migrants
Ink on paper
2018.47.2
Museum purchase with funds provided
by the Caroline Julier and James G.
Richardson Acquisition Fund

Didier Viodé
2016
Les Migrants
Ink on paper
2018.47.3
Museum purchase with funds provided
by the Caroline Julier and James G.
Richardson Acquisition Fund

Didier Viodé
2016
Les Migrants
Ink on paper
2018.47.4
Museum purchase with funds provided
by the Caroline Julier and James G.
Richardson Acquisition Fund

Martin Lewis
1927
Derricks at Night
Drypoint
2018.49.1
Museum purchase, funds provided by the
Fogler Family Endowment

Martin Lewis
1930
Corner Shadows
Drypoint and sand ground
2018.49.2
Museum purchase, funds provided by the
Fogler Family Endowment

Frank W. Benson
1920
Boats at Dawn
Etching
2018.50.1
Museum purchase, funds provided by the
David A. Cofrin Acquisition Endowment

Frank W. Benson
1920
Sunrise
Etching
2018.50.2
Museum purchase, funds provided by the
David A. Cofrin Acquisition Endowment

Thomas Hart Benton
1945
Loading Corn [Shucking Corn]
Lithograph
2018.50.3
Museum purchase, funds provided by the
David A. Cofrin Acquisition Endowment

Thomas Hart Benton
1943
Morning Train [Soldier's Farewell]
Lithograph
2018.50.4
Museum purchase, funds provided by the
David A. Cofrin Acquisition Endowment

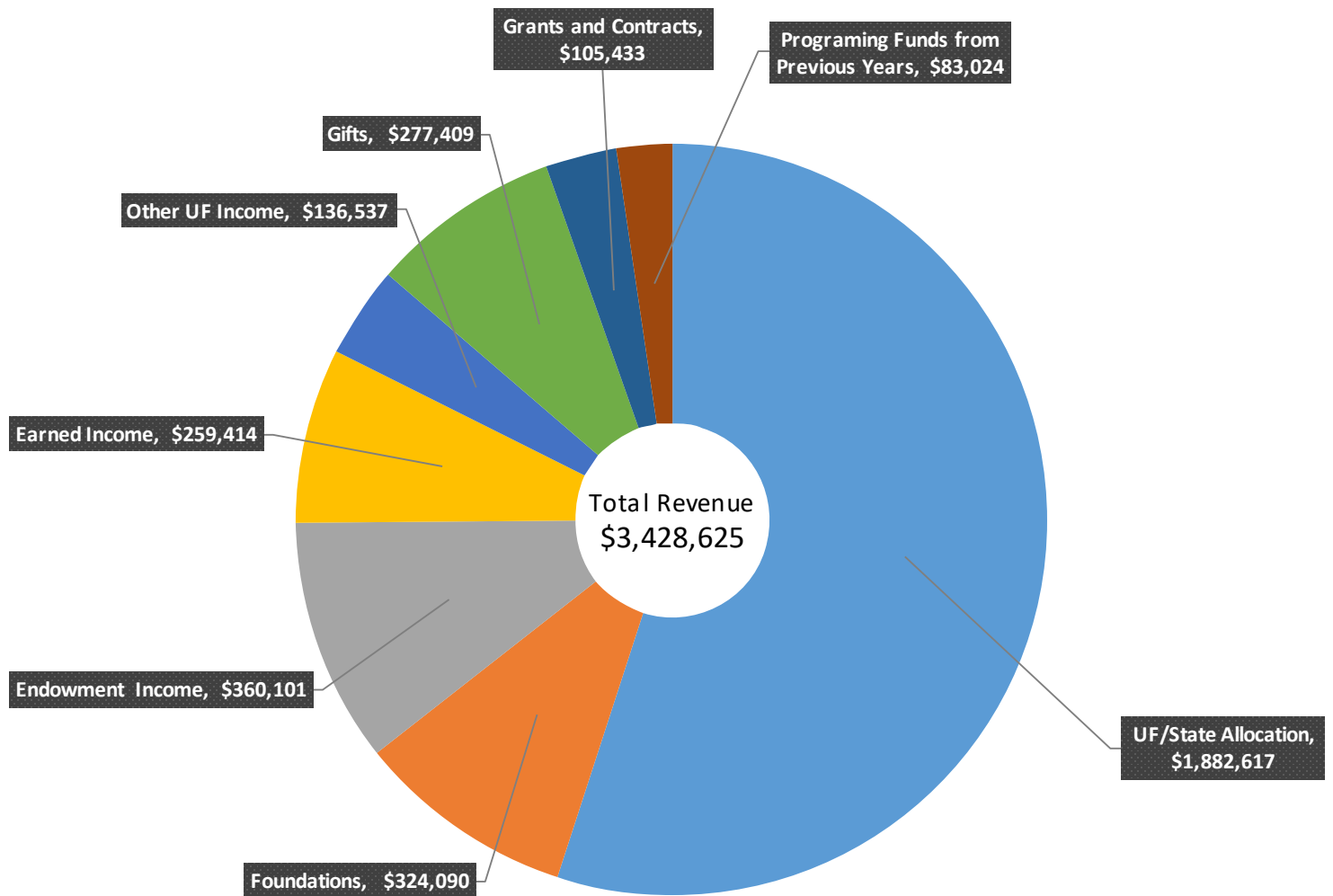
Childe Hassam
1918
Avenue of the Allies
Lithograph
2018.50.5
Museum purchase, funds provided by the
David A. Cofrin Acquisition Endowment

David Alfaro Siqueiros
1944–1945
**El Centauro de la Conquista (The
Centaur of the Conquest)**
Lithograph
2018.51.1
Museum purchase, funds provided by the
David A. Cofrin Acquisition Endowment

David Alfaro Siqueiros
1929
Cabeza (Head)
Color lithograph
2018.51.2
Museum purchase, funds provided by the
David A. Cofrin Acquisition Endowment

Isidoro Ocampo
1940
Motivo de feria (Scene at a Fair)
Lithograph
2018.51.3
Museum purchase, funds provided by the
David A. Cofrin Acquisition Endowment

FINANCIALS

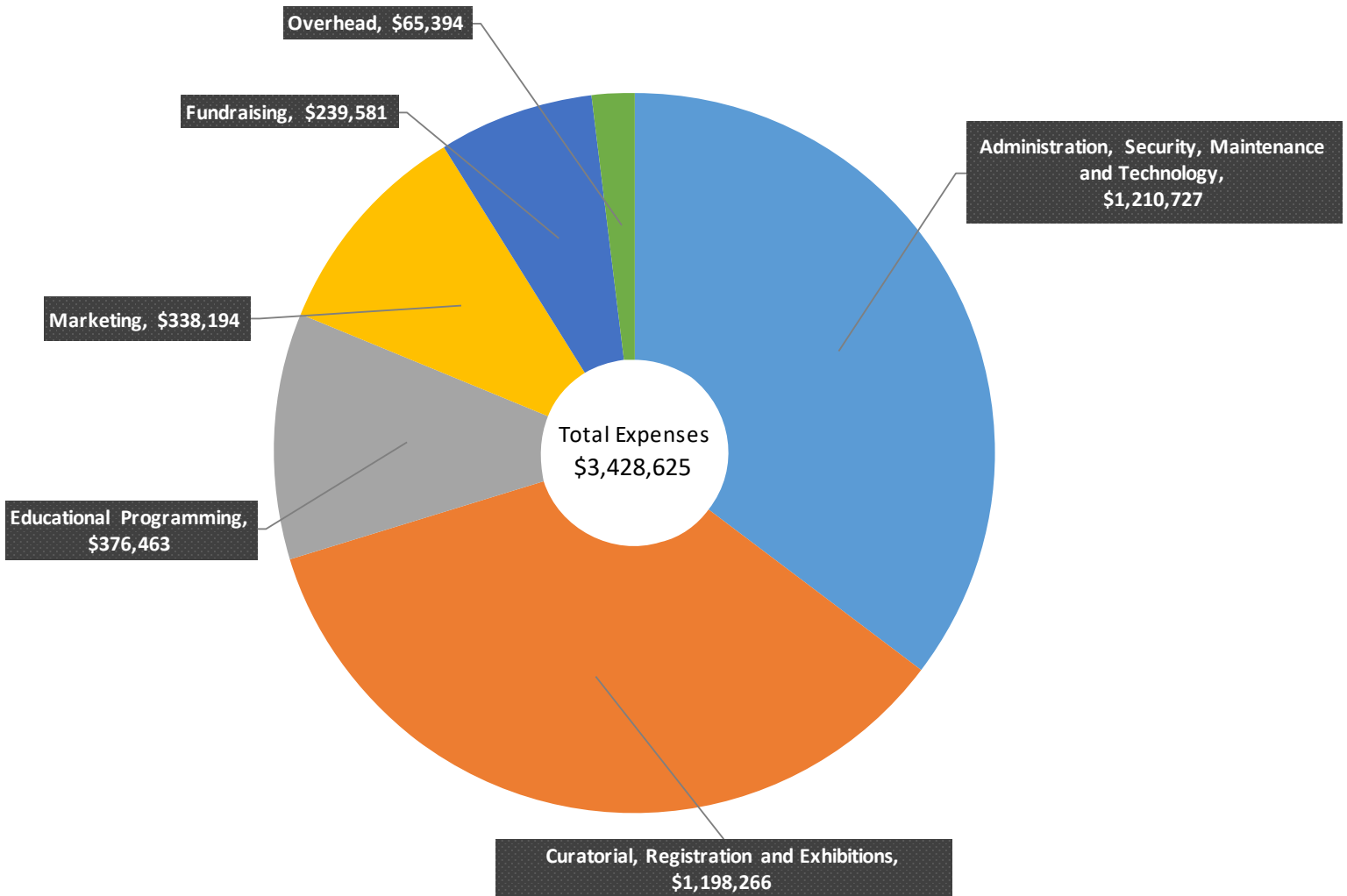


REVENUE

▶ UF/State Allocation	1,882,617.00	54.91%
▶ Foundations	324,090.00	9.45%
▶ Endowment Income	360,101.00	10.50%
▶ Earned Income	259,414.00	7.57%
▶ Other UF Income	136,537.00	3.98%
▶ Gifts	277,409.00	8.09%
▶ Grants and Contracts	105,433.00	3.08%
▶ Programing Funds from Previous Years	83,024.00	2.42%
Total Revenue	\$3,428,625.00	100%

**This report includes unaudited cash basis financial information for the year ended June 30, 2018 and is not intended to represent a complete financial statement presentation.

FINANCIALS



EXPENSES

▶ Administration, Security, Maintenance and Technology	1,210,727.00	35.31%
▶ Curatorial, Registration and Exhibitions	1,198,266.00	34.95%
▶ Educational Programming	376,463.00	10.98%
▶ Marketing	338,194.00	9.86%
▶ Fundraising	239,581.00	6.99%
▶ Overhead	65,394.00	6.99%
Total Expenses	\$3,428,625.00	100%

**This report includes unaudited cash basis financial information for the year ended June 30, 2018 and is not intended to represent a complete financial statement presentation.

ENDOWMENTS

PROGRAM ENDOWMENT

Criser Internship Fund
Daniel and Lori Slotkin Publication Endowment
Dixie and Peter Neilson Conservation Laboratory Endowment
Dixie Neilson Museum Studies Registration Internship
Dr. Madelyn M. Lockhart Curatorial Research, Travel and Publication Endowment
Dr. Madelyn M. Lockhart Endowment for Focus Exhibitions at the Harn Museum of Art
Eloise R. Chandler Program Endowment Fund
Harn Program Endowment
Harold Walton and Margaret Harn Goforth Endowment
John Early Publications Endowment
John V. and Patricia M. Carlson Program Endowment Fund
Laura and Kenneth Berns Docent Program Endowment
Londono Family Endowment
Margaret J. Early Program Endowment
Mary M. James Student Inspiration Fund for the Harn Museum of Art
Michael A. Singer Fund
Myra L. Engelhardt and Lawrence E. Malvern Endowment
Rick and Aase Thompson Fund
Robert C. and Nancy Magoon Contemporary Exhibition and Publication Endowment
Sidney Knight Endowment Fund
The Drs. Rebecca and Paul Nagy Education Endowment
The S.F.I. Educational Endowment
UF 150th Anniversary Cultural Plaza Endowment-Harn
Wells Fargo Museum Technology Endowment
William E. and Katherine A. Elmore Endowment for Asian Art Conservation

ACQUISITION ENDOWMENT

Caroline Julier and James G. Richardson Acquisition Fund
David A. Cofrin Acquisition Endowment
David A. Cofrin Fund for Asian Art
Fogler Family Endowment
Gladys Harn Harris Art Acquisition Endowment
Melvin and Lorna Rubin Fund
Phil and Barbara Emmer Art Acquisition Endowment
Robert H. and Kathleen M. Axline Acquisition Endowment
Ruth P. Phillips Art Acquisition Endowment
SFI Endowment for the Harn Museum

CURATORIAL ENDOWMENT

Cofrin Curator of Asian Art Endowment
Harn Curator of Photography

GIFTS IN MEMORY AND HONOR OF

In memory of Dr. Eva A. Dimitrov
EAD, Inc.

In memory of Gale C. Ford
Mrs. Julia C. Bishop

In memory of Mary Ann Green
Mr. Donald N. Cavanaugh, Jr. & Mr. Edward G. Blue

In memory of David Johns
Mrs. Ann M. Johns

In honor of Dr. Rebecca M. Nagy
Friends of Susan B. Anthony

In honor of Dr. Rebecca M. Nagy
Mr. Hector G. Puig & Ms. Olga Vygovskaya

In honor of Dr. Rebecca M. Nagy
Dr. Kenneth D. Webster & Ms. Lucinda S. Lavelli

In honor of Dr. Rebecca M. Nagy
1923 Fund

In honor of Dr. Rebecca M. Nagy
Ms. Fran P. Mauney

In honor of Dr. Rebecca M. Nagy
Mr. James H. Lindner & Dr. Angela S. Lindner

In honor of Dr. Rebecca M. Nagy
Rembert Family Foundation, Inc.

In honor of Dr. Rebecca M. Nagy
Ms. Mary Atha Forrest

In honor of Dr. Rebecca M. Nagy
Ms. Gwynne A. Young

In honor of Dr. Rebecca M. Nagy
Mr. James M. O'Dell, Jr. & Mrs. Liesl O. O'Dell

In honor of Dr. Rebecca M. Nagy
Ms. Carolyn S. Horter

In memory of Vera Marie Poynor
Dr. Robin E. Poynor & Mrs. Donna H. Poynor

HARN NATIONAL COUNCIL MEMBERS

ACTIVE MEMBERS

Ken Berns
Laura Berns
Irma Braman
Norman Braman
John Carlson
Patricia Carlson
Deirdre Fogler - Chair
Russ Fogler
Carol Horvitz
Jeffrey Horvitz
Bob Magoon
Nancy Magoon
Lorna Rubin
Steve Shey
Aase Thompson

EX-OFFICIO

Linda Fuchs
Smith Meyers

EMERITUS

Mary Ann Cofrin
Bill and Hazel Hough
Mel Rubin (deceased)
Carol Shey
Ron Shore
Rick Thompson



above: Ellen Auerbach, *Strawberry Woman, Morelia, Mexico*, 1956, Gift of Edward R. and Joanne Block, 2017.55.9

